

R E D V E L V E T
L U X E



"Luxury Within Your Reach"

Introducing....**Red Velvet Luxe**

You're invited to a unique in-store retail experience located in Bergen County, NJ. It's heaven for savvy consumers who know designer jewelry and have a passion for luxury watches.

At **Red Velvet Luxe**, Founder and President Randi Shinske, is thrilled to offer you luxury watch and jewelry brands at **40% to 70% off retail, everyday!**

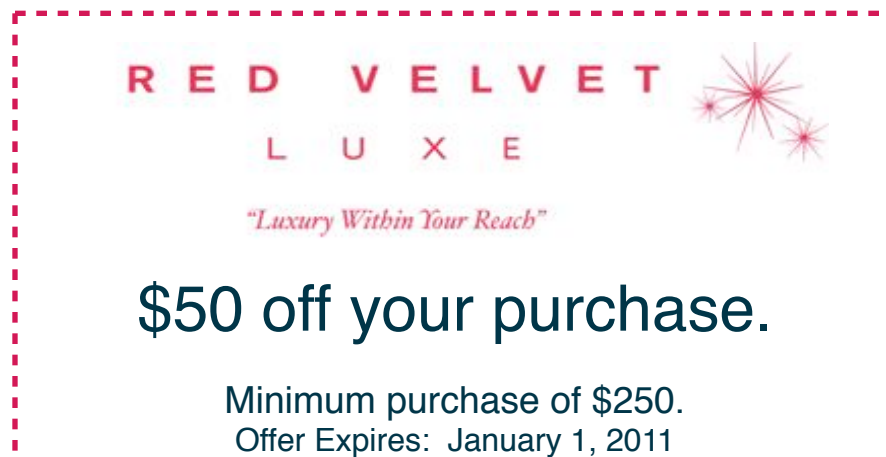
With more than 20 years' experience as a luxury brand executive, Randi finds the best buying opportunities on **the most exclusive brands** - *putting luxury within your reach.*

As a special introduction to you, Randi is offering even bigger savings on luxury brands. Just in time for the holidays take advantage of the \$50 coupon below to **receive \$50* off your next purchase.** All you need to do is bring in this coupon and you are on your way to owning exclusive jewelry and watches...at unbelievable **40% to 70% off retail prices!**

When you hear good news - naturally you want to share it. So please pass along **Red Velvet Luxe's** incredible offer to friends and family!

Don't miss out! Come in or call us to start your Red Hot Holiday shopping at **Red Velvet Luxe.**

*Special one-time introductory offer on a minimum purchase of \$250.



59 E. Ridgewood Avenue Ridgewood, NJ 07450

O. 201.689.1800 F. 201.689.1808

Randi@RedVelvetLuxe.com www.RedVelvetLuxe.com